

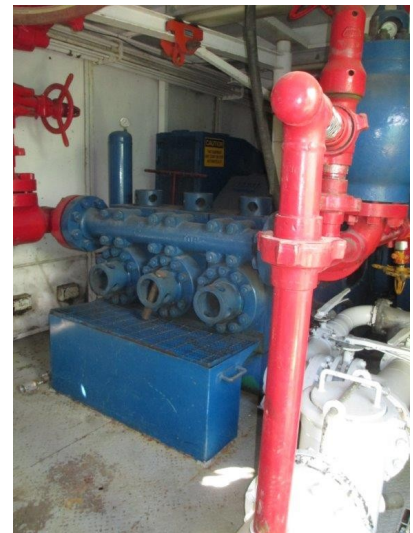


7003 Girard Road, Edmonton, AB, T6B 2C4
Phone: (780) 450-6363
Fax: (780) 461-5827
Contact: Terry Mielke (780) 699-9538 (cell)
Rob Reeves (780) 699-9536 (cell)
WWW.GLOBALPOWER.CA

**BOMCO F-800 MUD PUMP PACKAGE
POWERED BY CAT 3412E ENGINE
ENCLOSED IN 12'4" W X 30' BUILDING**

GPS6402-GGPW

DETAILED INFORMATION ATTACHED



Global Power Component Information

Global GPS 6402 - GGPW6147

Mud Pump

Manufacturer	Model	Serial#
Bomco	F 800	CD 11-04
Discharge Block		
Size	Pressure Rating	Porting
Discharge Screen /Elbow	5000 / 35000Kpa	5" 4"
Pulsation Damper		
Model	Size	Pressure Rating
KB 45	4"	50000# /35000Kpa
Liner Lube /Flush		
Yes/ No	Type	Pump Size
Yes/ No	Mission	1" x 1 1/2"
External Lube		
Yes/No	Type	Pump Size
Yes	Electric 5 hp	3/4"x1"
Pressure Gauge		
Yes/No	Type	Pressure Rating
Yes	Type D Style	21000 Kpa
Pressure Relief Valve		
Yes/No	Type	Pressure Rating
Yes	Oteco Shear Pin	5000# / 35000Kpa

Prime Mover

Engine	Check one		
XXXX	Engine Transmission	Traction Motor	Compound Drive
Engine	Manufacturer	Model	HP
	Caterpillar	3412 E BFT 02357	750

Transmission

Manufacturer

Model

Traction Motor

Manufacturer

Model

HP

Drive Type (Check one)

Belt
 XXXX

Chain

Drive Shaft

Comments: Drive size, Manufacturer, etc.

Mud Pump Building

Building

Size
Length

Width

Height (if unusual)

Skid Size

Pump Suction

Size

Pre Charge
Yes/No Yes

P/CType, Check one

Electric

Pump Driven

Pinion thru Gearbox

Pump Discharge

Size

Check one Threaded /Welded
 XXXX

Storage Cabinets

Yes/No Yes

Liner Rack

Yes/No No

Other